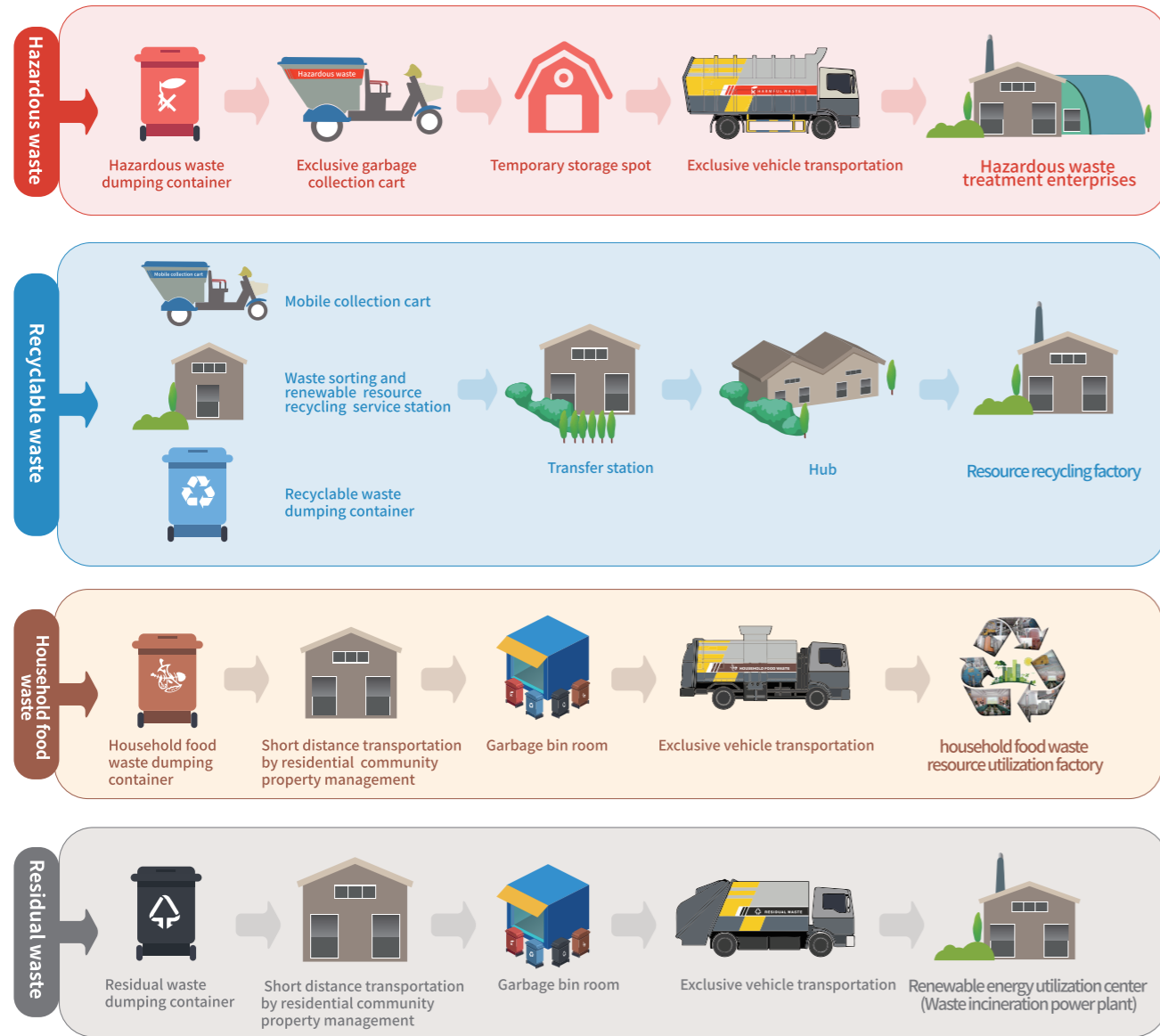


WHERE?! Where is the waste going?

Waste sorting treatment procedures

Where is the waste going?



Duty of persons responsible for waste sorting management

Persons responsible for waste sorting management:
 Property management service providers are primarily responsible; Property owners are responsible if there is no property management service provider; Village (town) people's governments or subdistrict offices should designate persons responsible if property management is not conducted.

Duties of persons responsible for household waste sorting management:

1. Set up household waste sorting container;
2. Take sorted household waste to waste bin room or small-scale compression and collection station; Ensure the waste is not mixed during the process;
3. Promote and guide household waste sorting; Dissuade and stop acts which are against waste sorting requirements.

Property owner representatives and property management service providers should reach an agreement on the service contents and charge standards on household waste sorting when they sign the property management service contract.

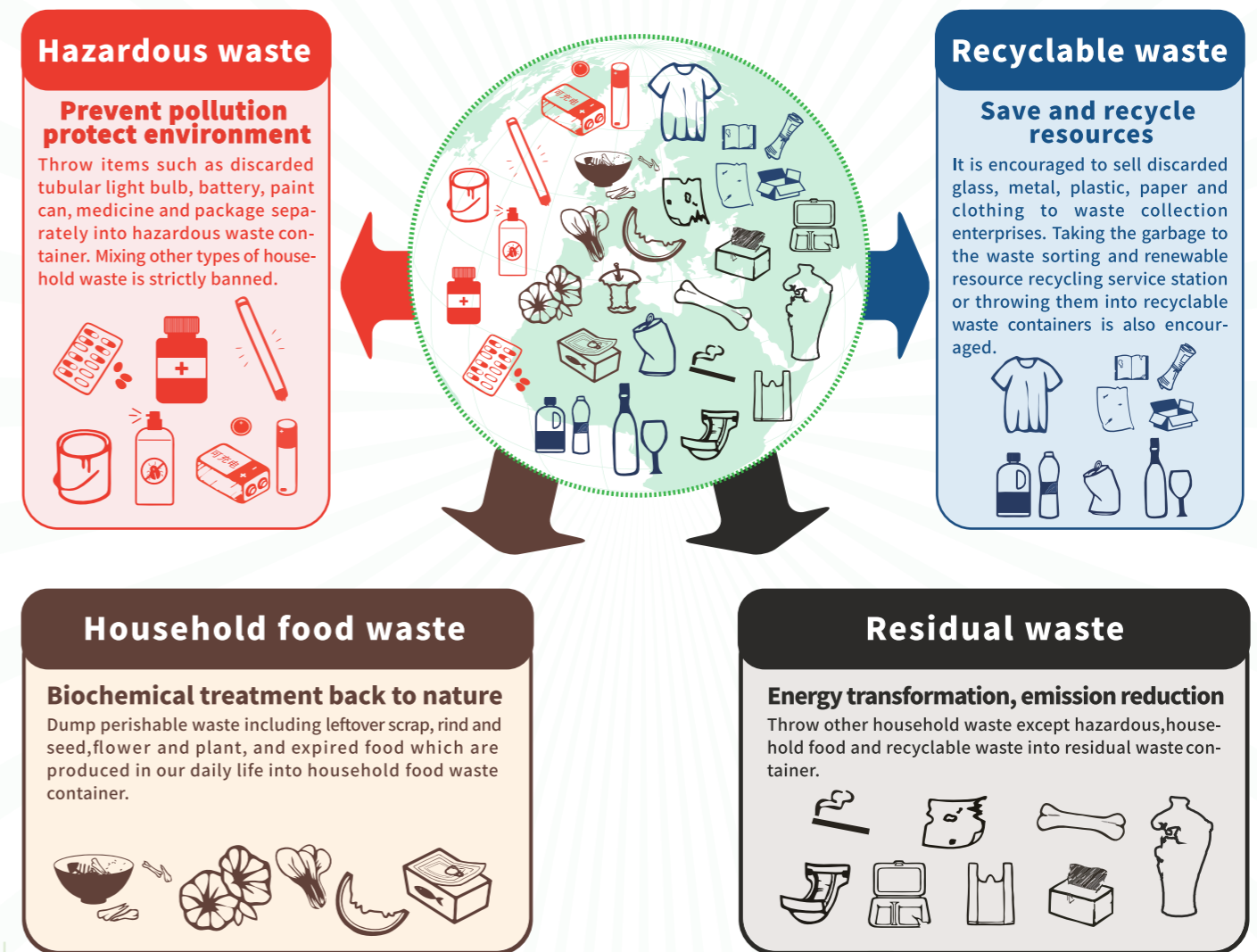
Persons responsible for residential community household waste sorting management can arrange household waste sorters to assist in classification when necessary.

“Ban, Encouragement, Sorting”

Shanghai Household Waste Sorting Guide

Residential community

Household wastes are divided into four types
hazardous waste **recyclable waste** **household food waste** **residual waste**





How can we sort household waste?

Sorting method and container placement



Where is the waste going?

Hazardous waste: waste posing direct or potential threats to public health or the environment

HAZARDOUS WASTE

Mainly includes:



Rechargeable battery, button cell, storage battery

Handle carefully



paint can, pesticide

If there is residue, make waste airtight before dumping



fluorescent light energy-saving lamp

Fragile, keep package or wrap them, handle carefully



Discarded medicine and package

Throw with package

Recyclable waste: appropriate for recycling and resource utilization, for example glass, metal, plastic, paper, clothing

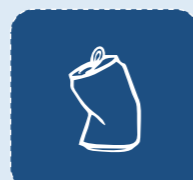


RECYCLABLE WASTE

Mainly includes:



Soy sauce bottle, glass, plate glass



pop can



beverage bottle, shampoo bottle plastic toy



book, newspaper, leaflet cardboard box

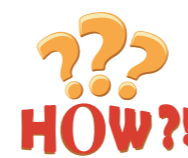


clothing, bedding



Notice

- Handle carefully;
- Empty contents from container, clean and flatten before throwing
- Wrap items with sharp edge before throwing
- Keep clean and dry, prevent pollution;
- Keep wastepaper smooth;



How can we sort household waste?

Sorting method and container placement



Where is the waste going?

Household food waste: perishable waste produced in daily life



HOUSEHOLD FOOD WASTE

Mainly includes:



leftover scrap



rind, seed



flower, plant



expired food



Notice

- Dump purely fluid food waste such as milk into sinks;
- Remove package first for household food waste with packaging before sorting, throw package into proper recyclable or residual waste container.

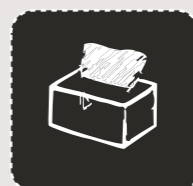
Residual waste :Other waste except hazardous, household food and recyclable waste



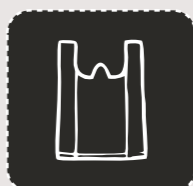
RESIDUAL WASTE



disposable dishware



napkin, wet wipe toilet paper



plastic bag food packaging



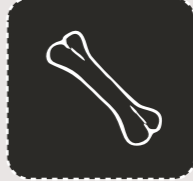
seriously polluted paper



cigarette butt



paper diaper



big bone, shell



flower pot, ceramics



Notice

- Drain water;
- Throw household waste with indistinct category into residual waste container.



Notice: The leaflet is recycled paper. Please throw it into recyclable waste container after reading if you don't want to keep it. Thank you for your cooperation!